

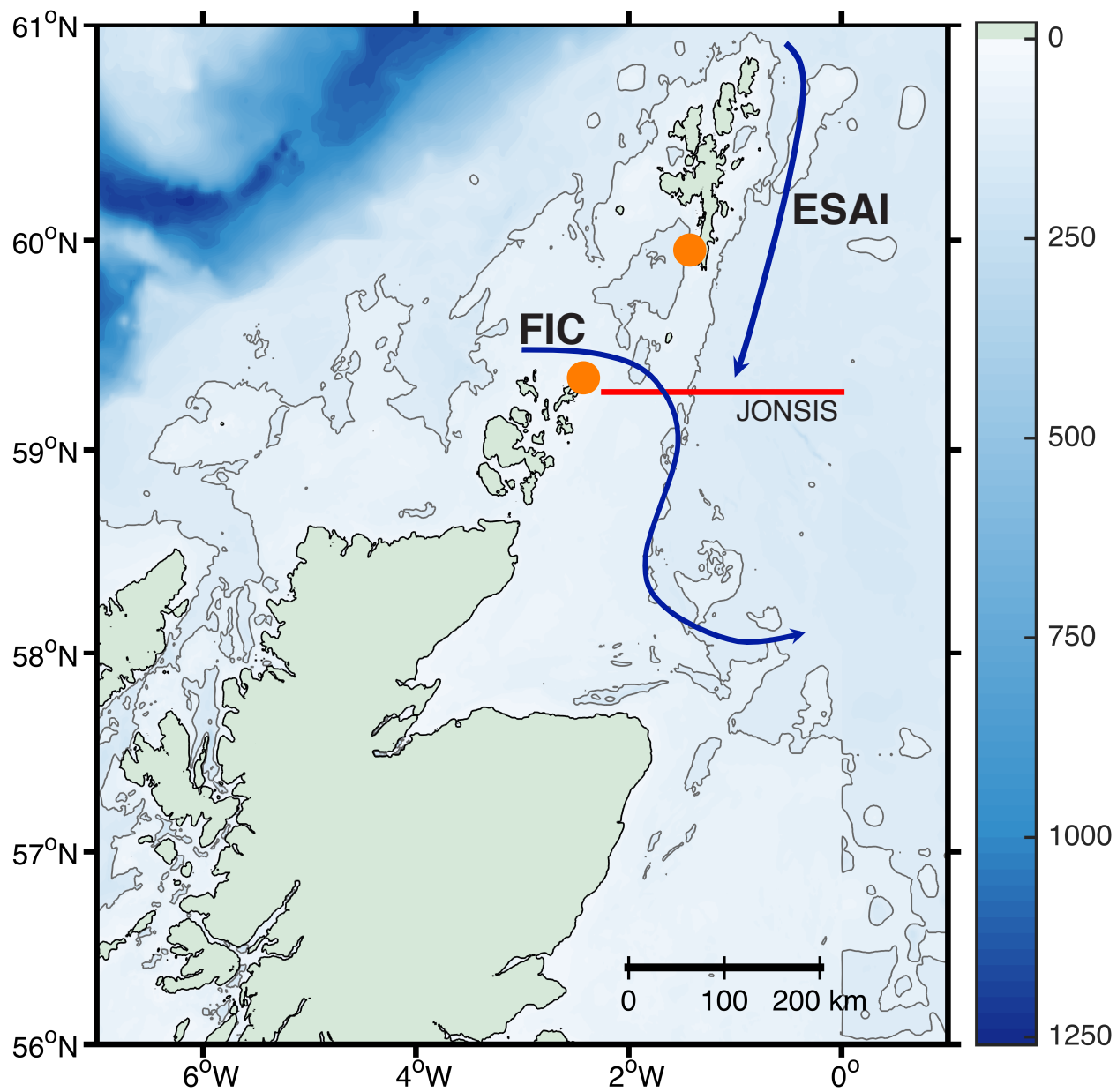
Tidal and frontal flows in the Fair Isle Current observed using a Seaglider

Peter Sheehan Bee Berx Alejandro Gallego Rob Hall Karen Heywood

p.sheehan@uea.ac.uk

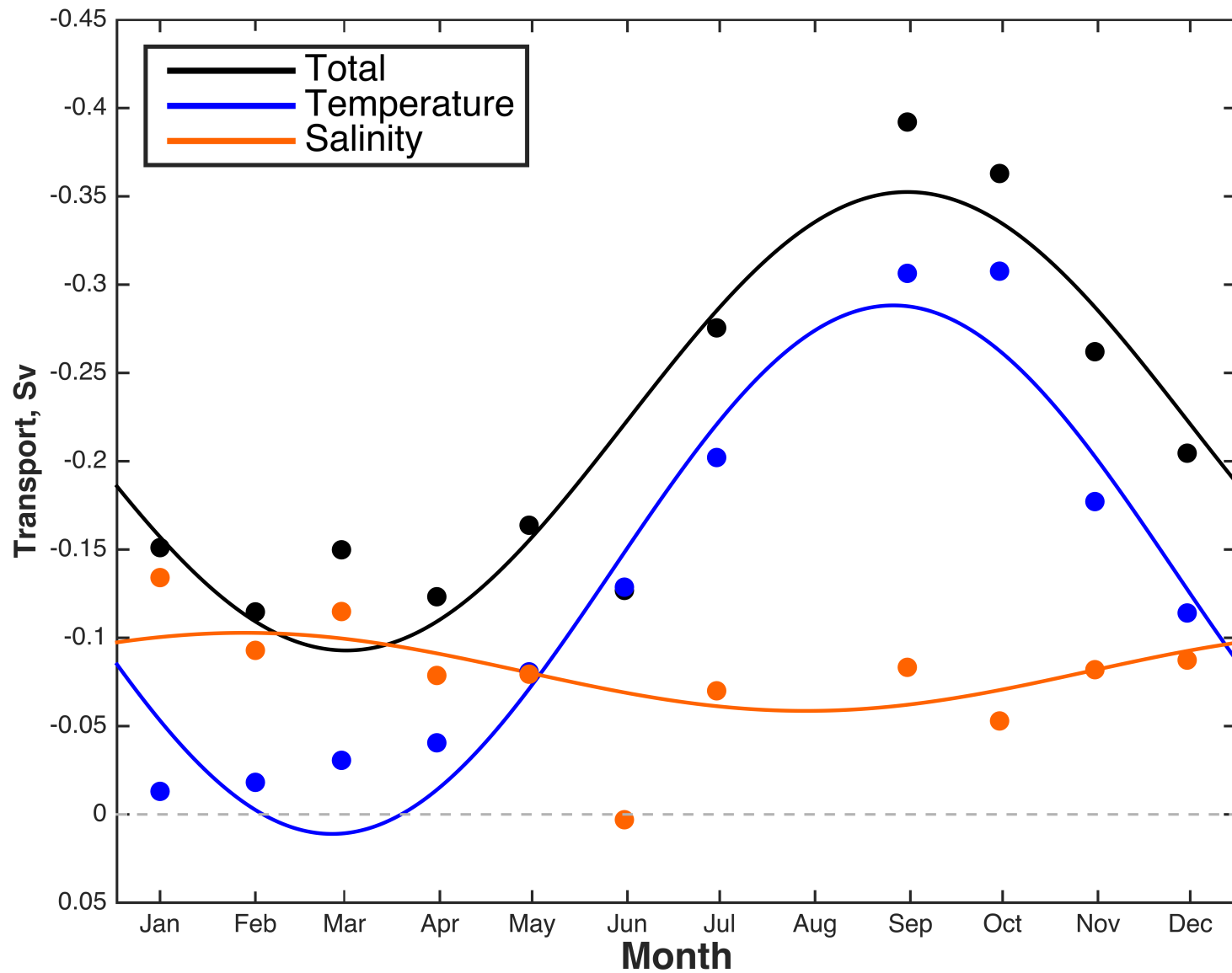
marinescotland





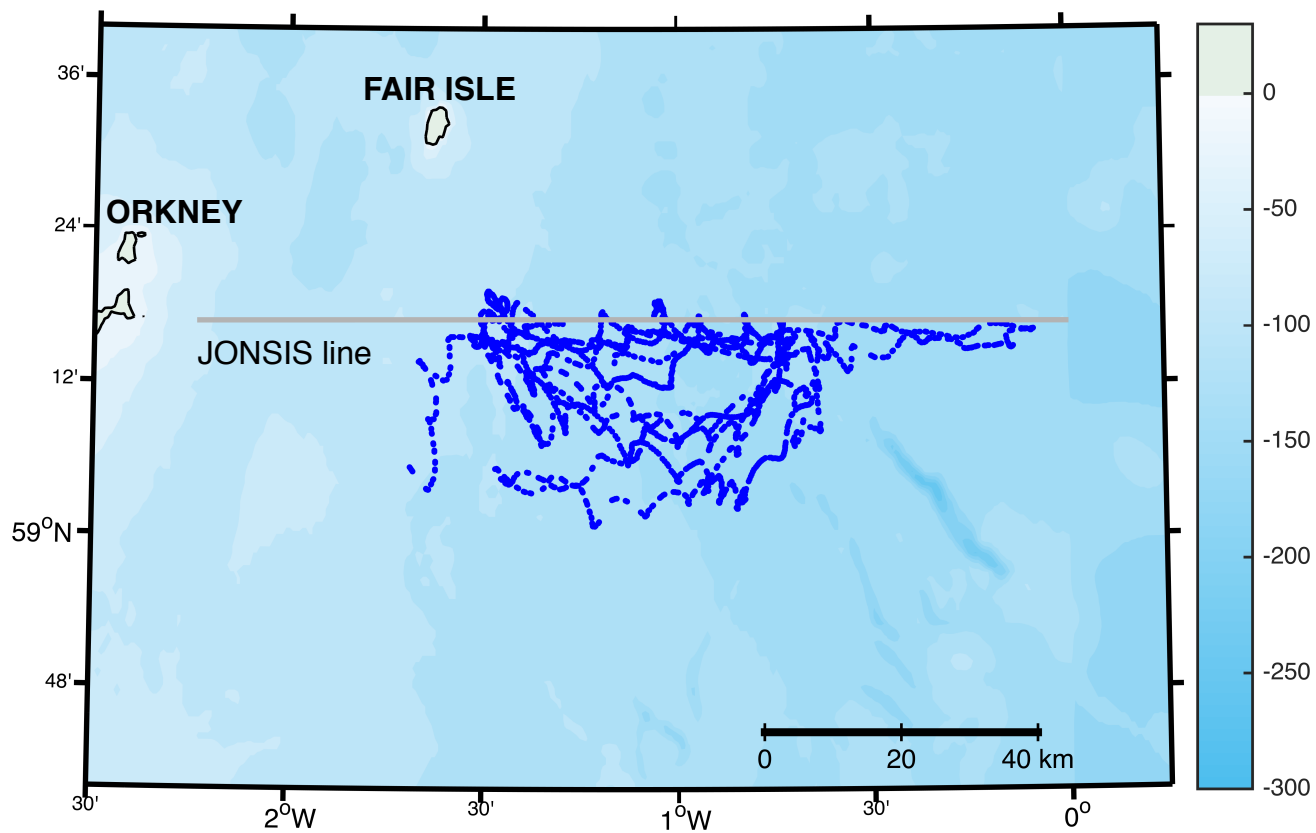
Bathymetry from Gebco (2008)
Based on Turrell et al (1996)

Long-term observations



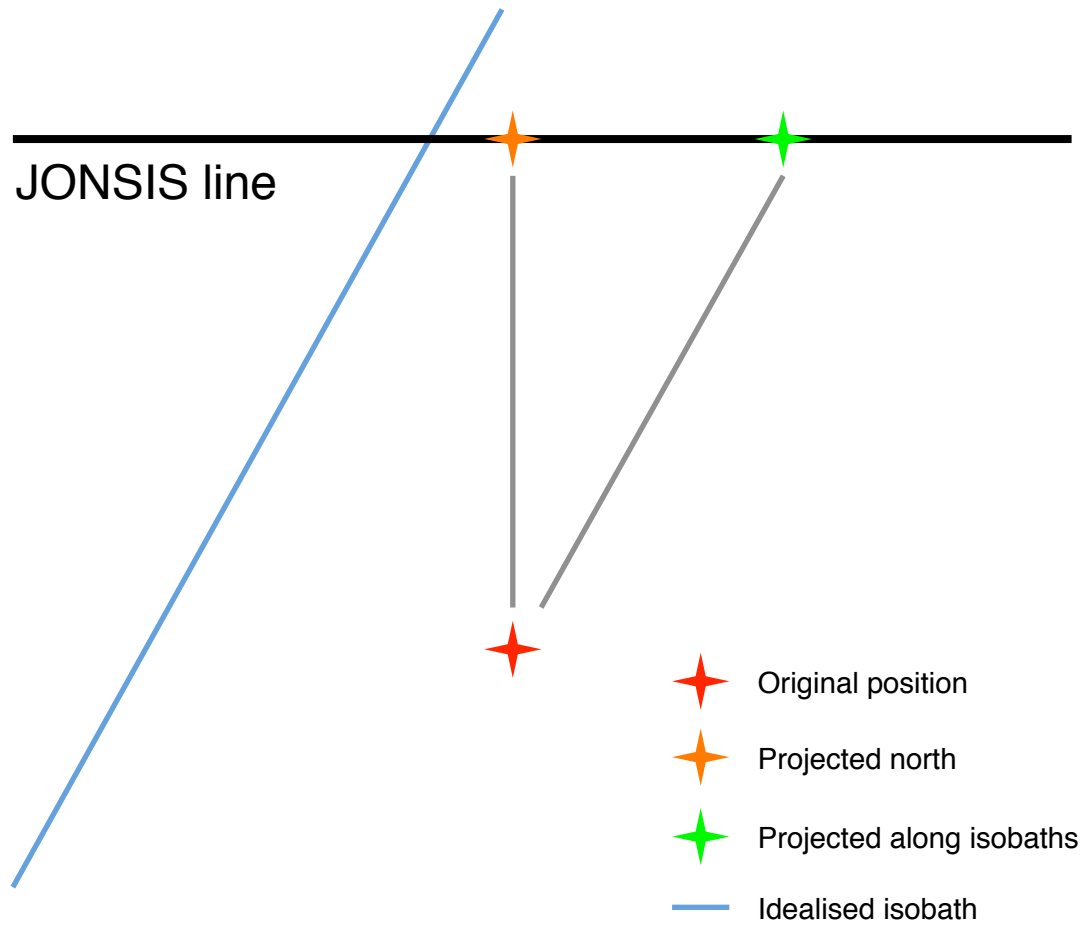
Data

Dive locations

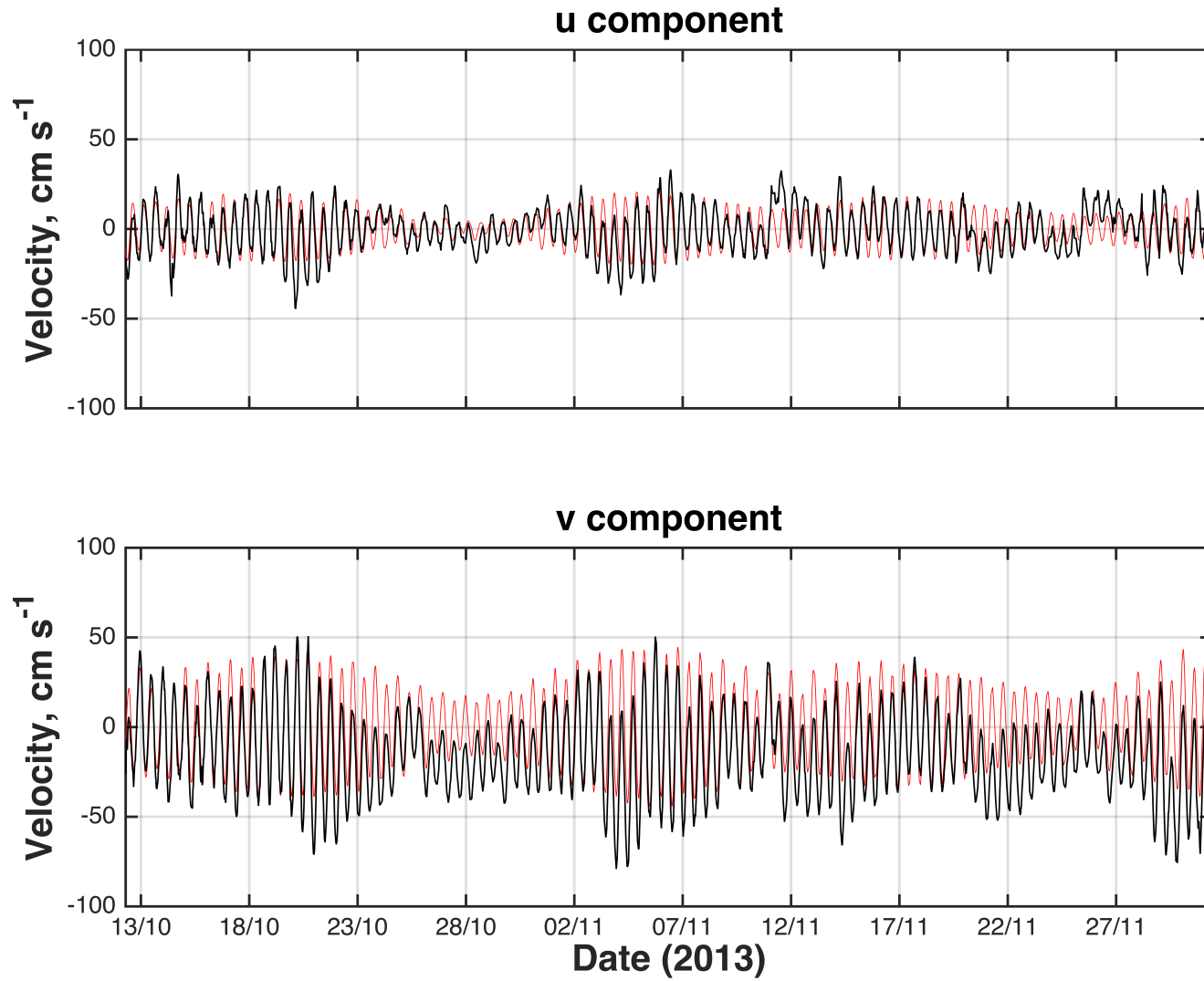


Data

Longitude projection & objective mapping

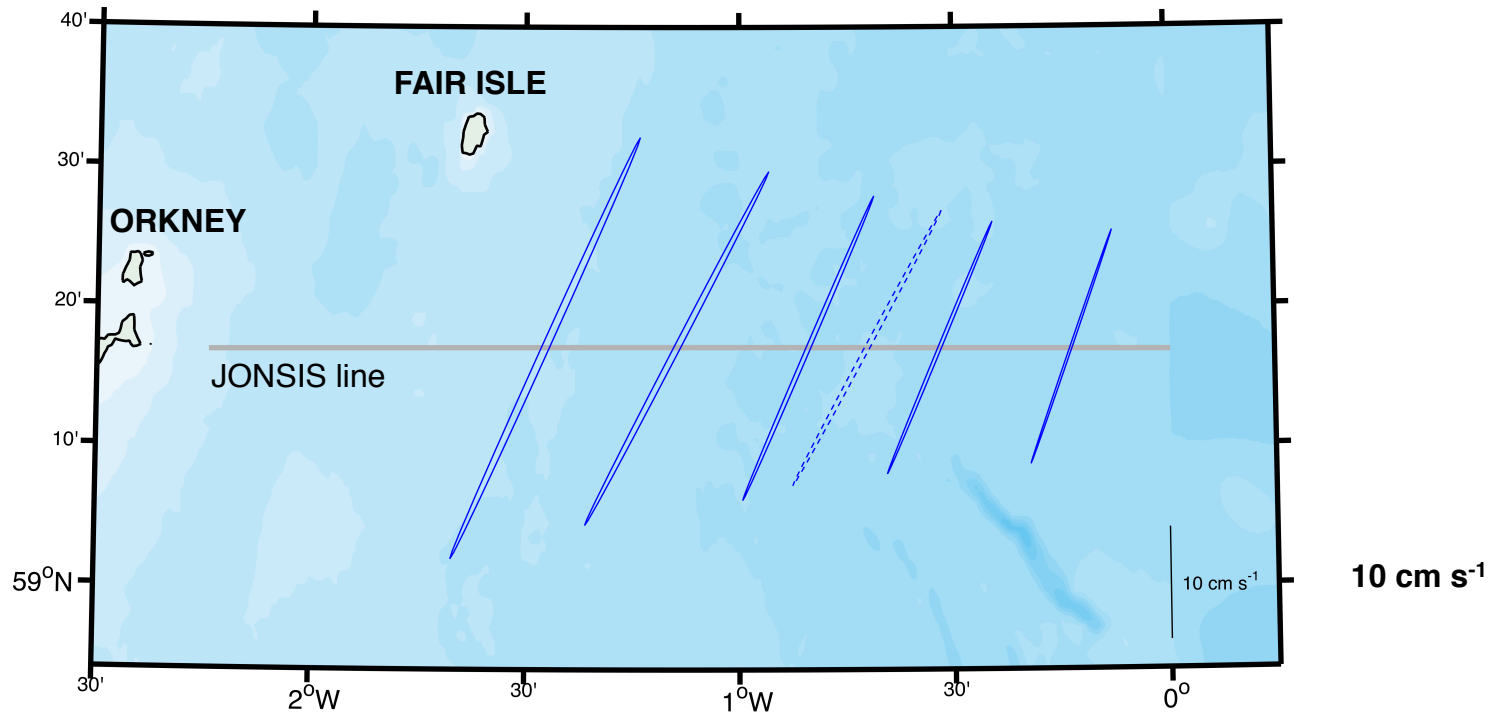


Dive-average current



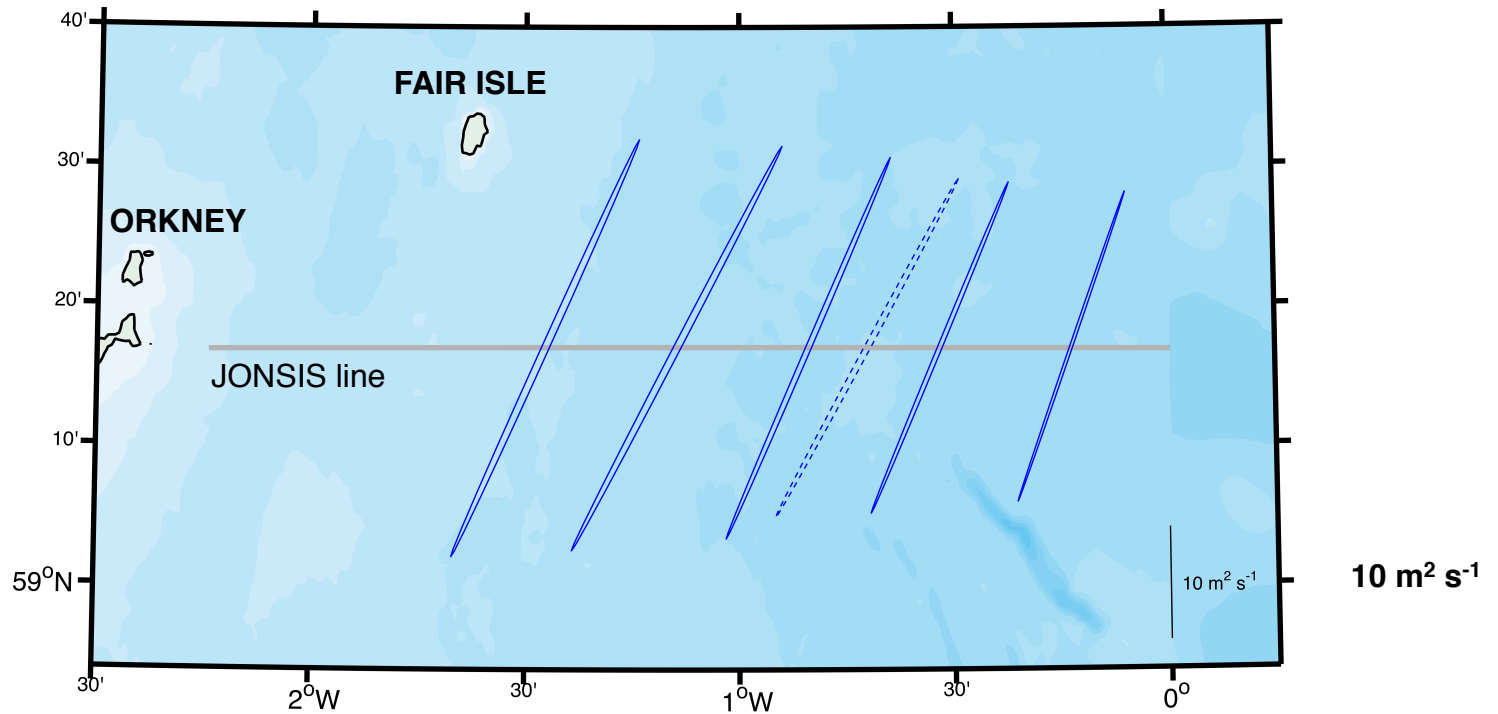
M2 tidal ellipses

Velocity



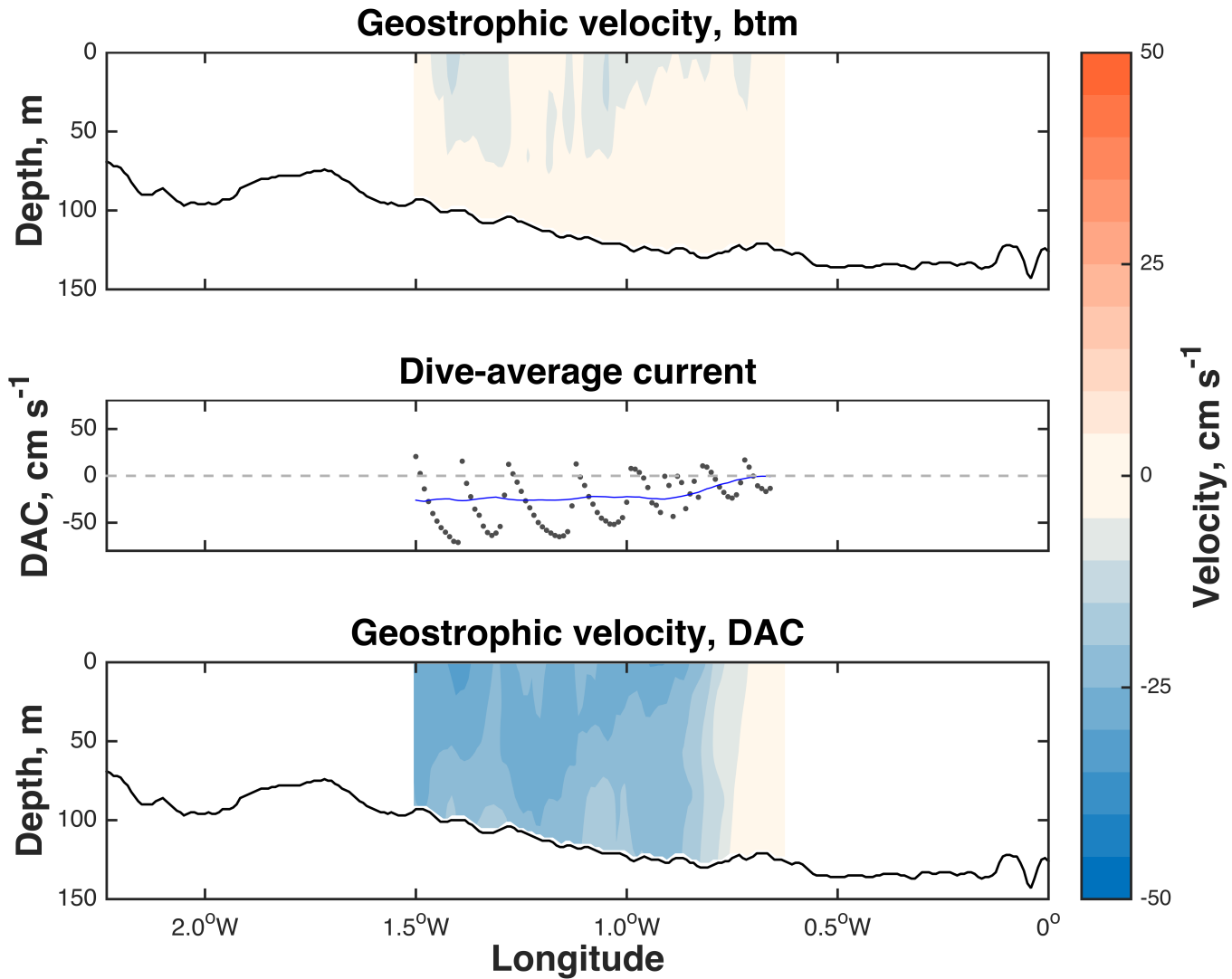
M2 tidal ellipses

Transport



Geostrophic velocity

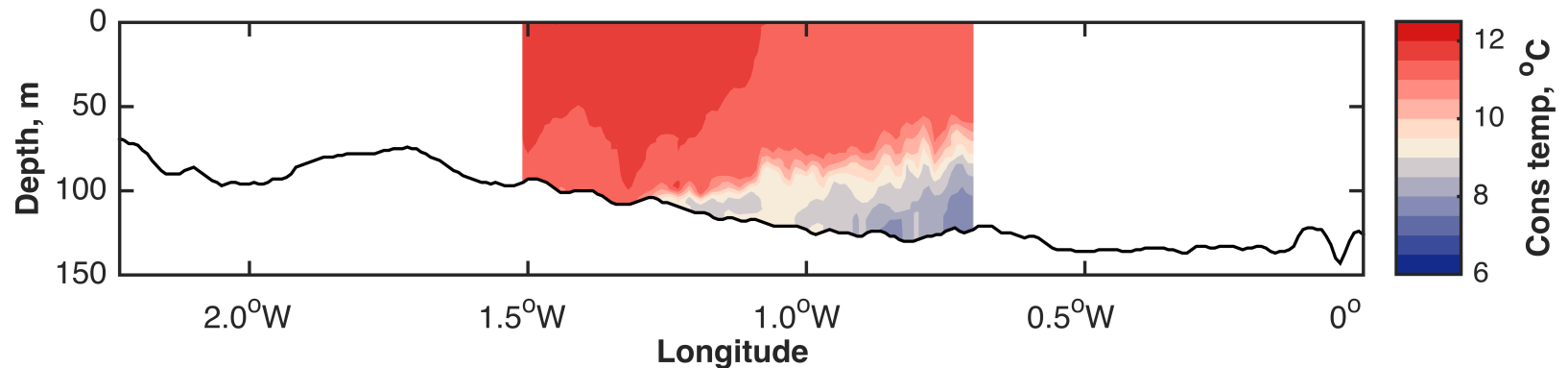
CTD versus Seaglider



Stratification parameter

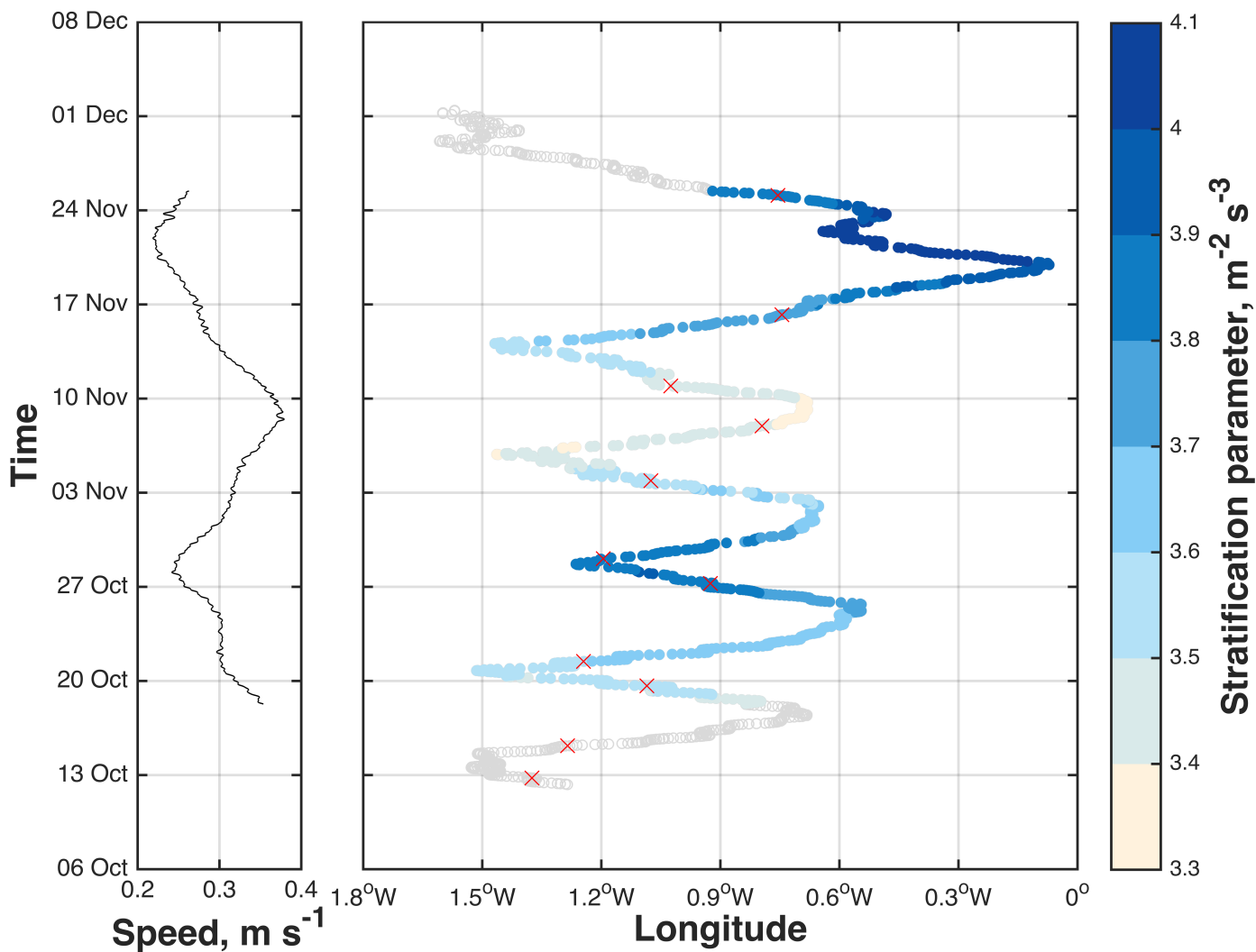
Definition

$$\log \left(\frac{h}{u^3} \right)$$



Stratification parameter

Results



Summary

- ✦ Data have been projected along idealised isobaths
- ✦ M2 tidal ellipses can be drawn from Seaglider data
- ✦ Dive-average current observations vital for accurately estimating transport
- ✦ Frontal location does not appear to be related to stratification parameter