

GLIDERSCOPE: Ocean glider data visualisation software

Christine Hanson, Mun Woo, Ben Hollings & Chari Pattiaratchi

Australian National Facility for Ocean Gliders (ANFOG),
School of Environmental Systems Engineering (SESE),
The University of Western Australia, Perth WA



THE UNIVERSITY OF
WESTERN AUSTRALIA
Achieving International Excellence

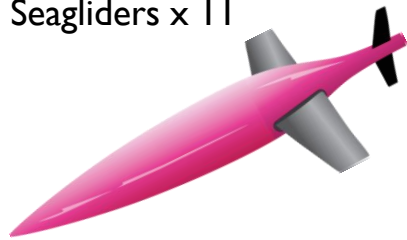
Australian National Facility for Ocean Gliders (ANFOG)

- ANFOG operational since mid-2008

Slocum gliders x 4



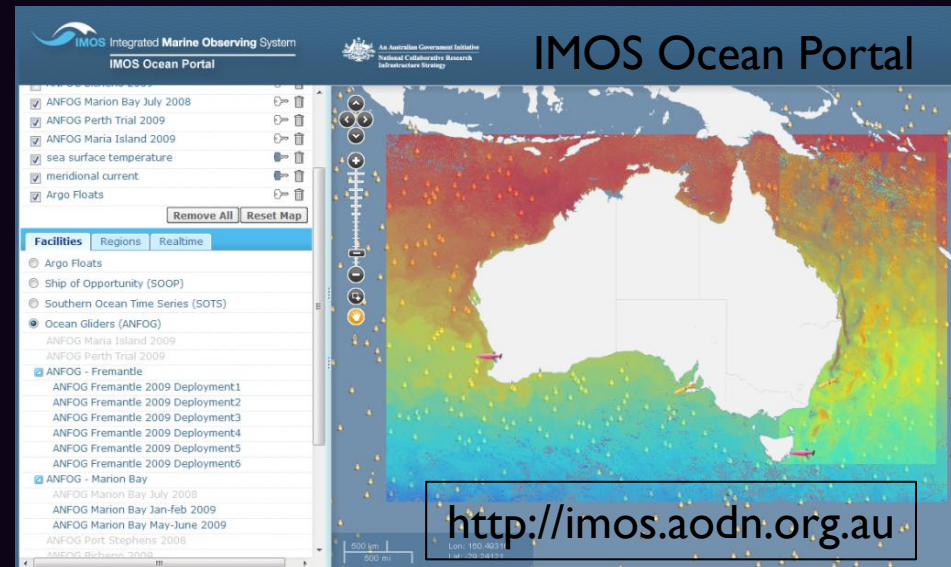
Seaglidors x 11



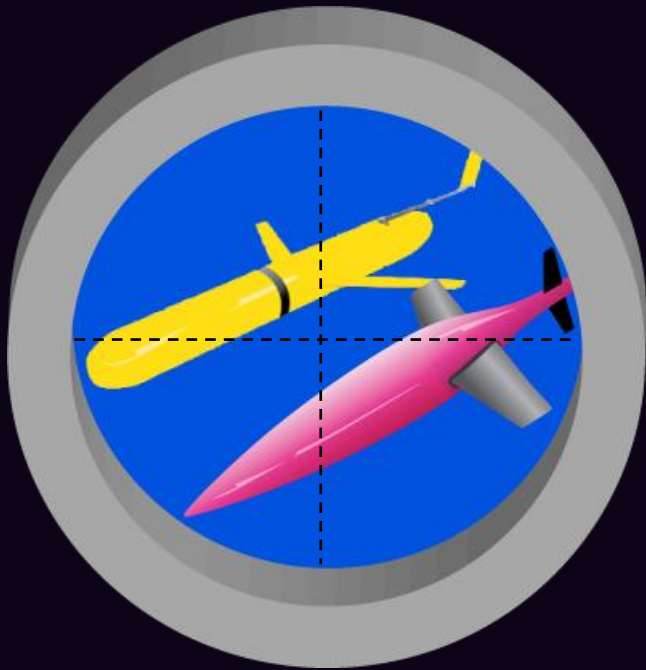
- Sustained observations off western, southern and eastern coasts of Australia to date

- As part of Australia's Integrated Marine Observing System (IMOS), all ANFOG data is freely available

- Files are NetCDF (Network Common Data Form)
- Wide range of users – led to development of glider visualisation software

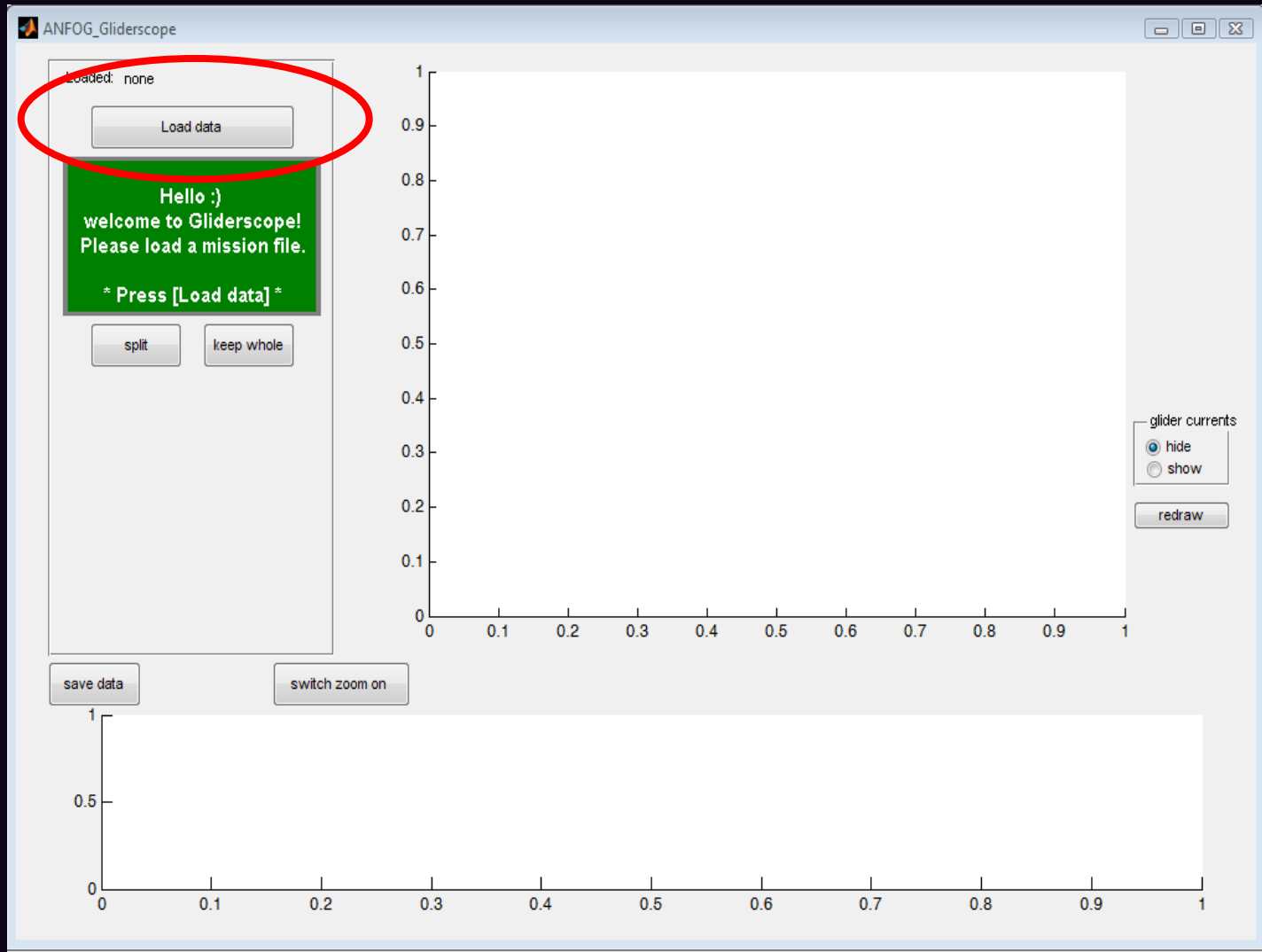


ANFOG GLIDERSCOPE



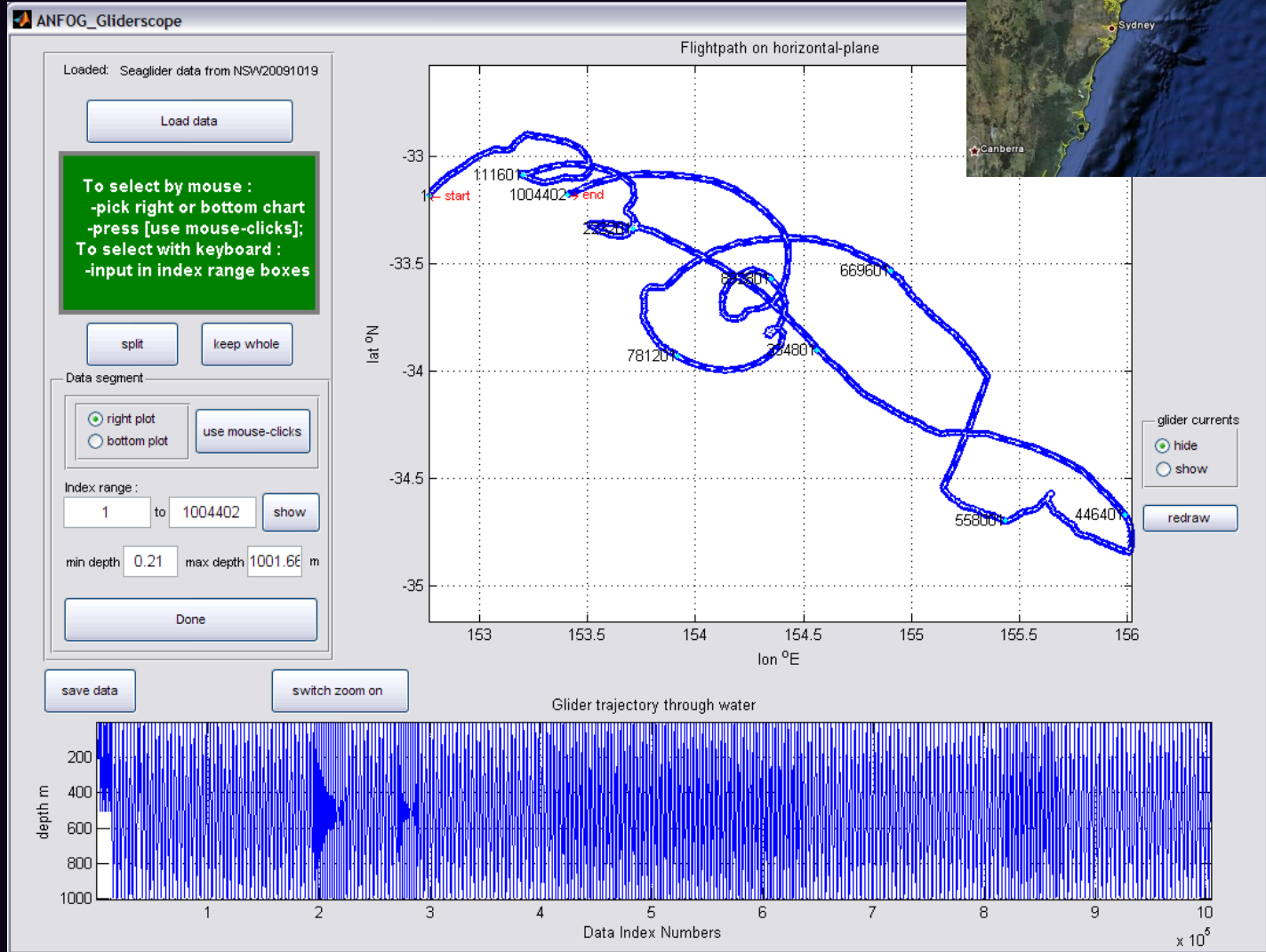
- Software to visualise and extract ocean glider data
- Uses Matlab Component Runtime (MCR)
- GUI for easy access to NetCDF files
- Filters out bad data
- Visualise data using 2D & 3D plots of water properties, interpolated contours, vertical profiles, etc.
- Choose and extract segments of glider data for use within GLIDERSCOPE or export to other applications

GLIDERSCOPE



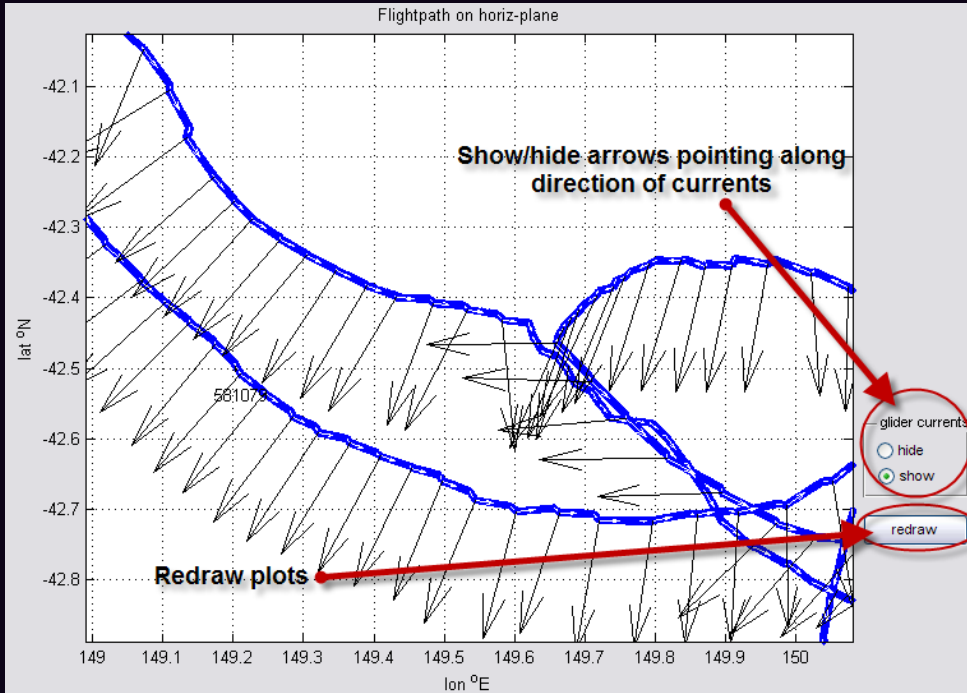
GLIDERSCOPE's main dashboard with controls for loading and extracting data

Load data & examine glider path

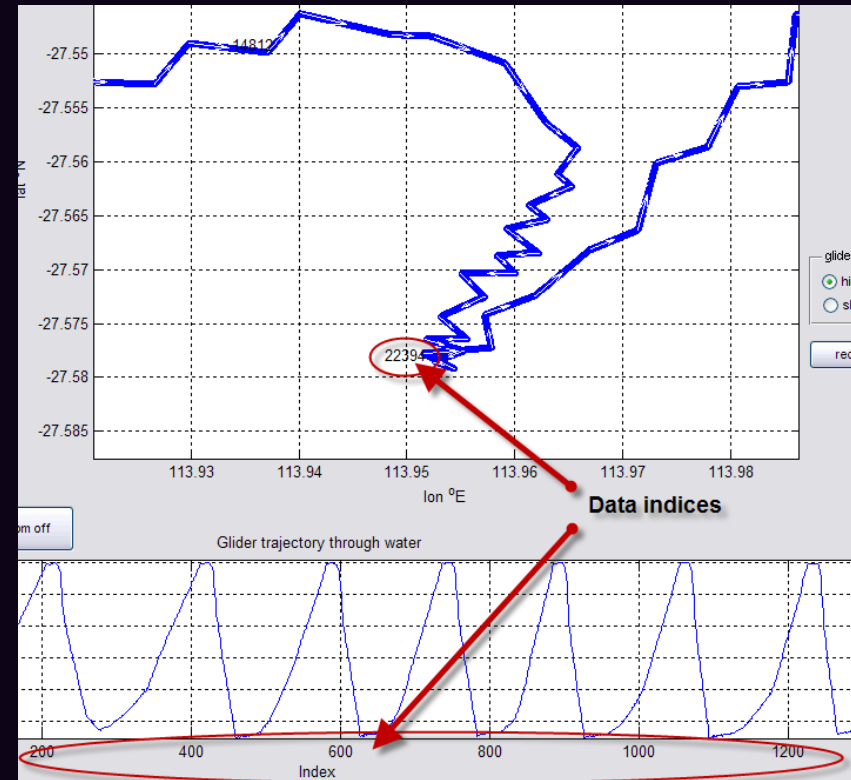


GLIDERSCOPE's main dashboard with controls for loading and extracting data

View current vectors & vertical path

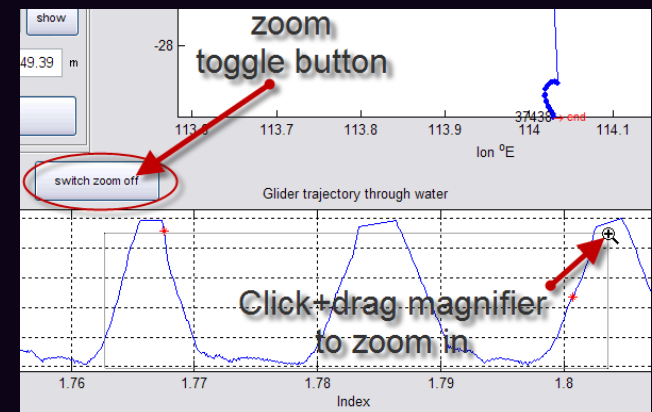
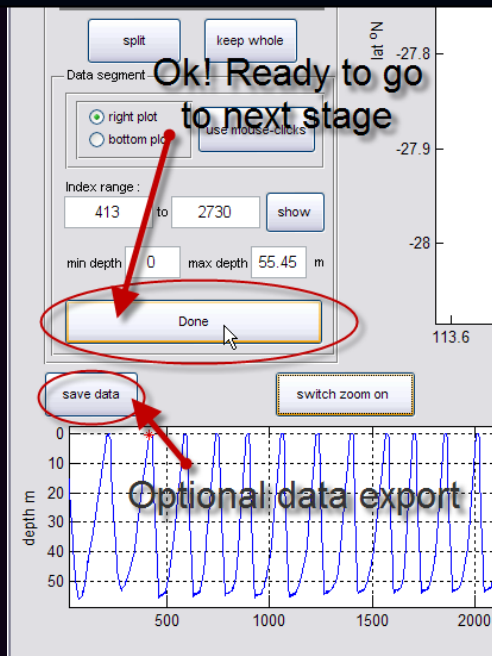
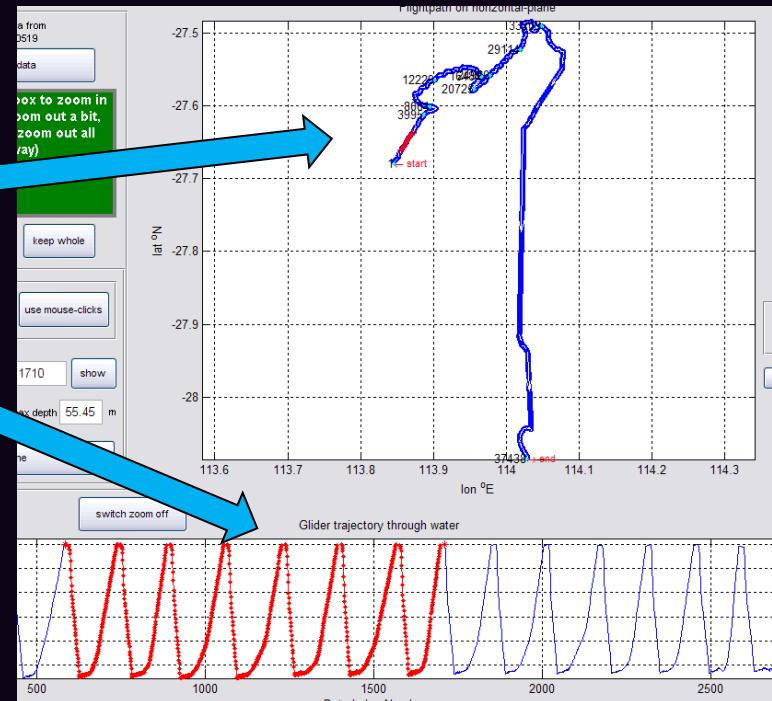
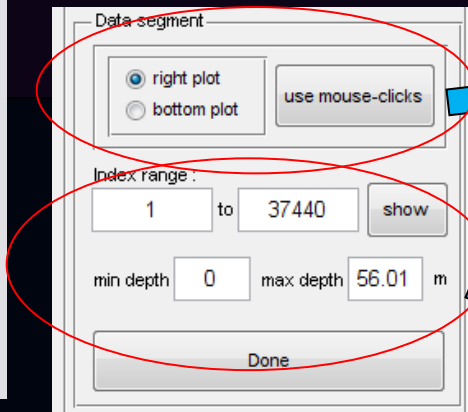
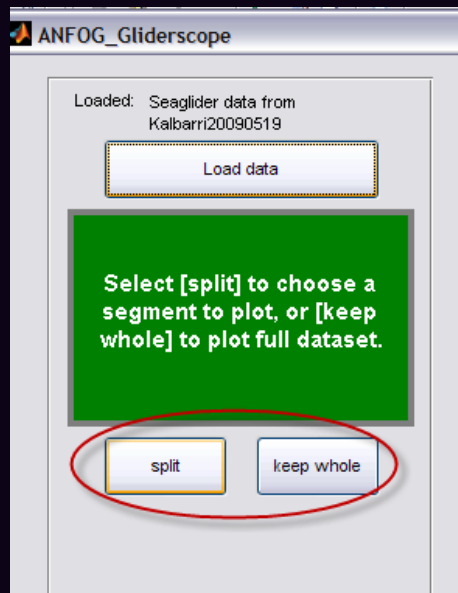


Aerial view of the glider path can be supplemented with current vectors (depth-mean values) computed from GPS fixes and onboard engineering parameters

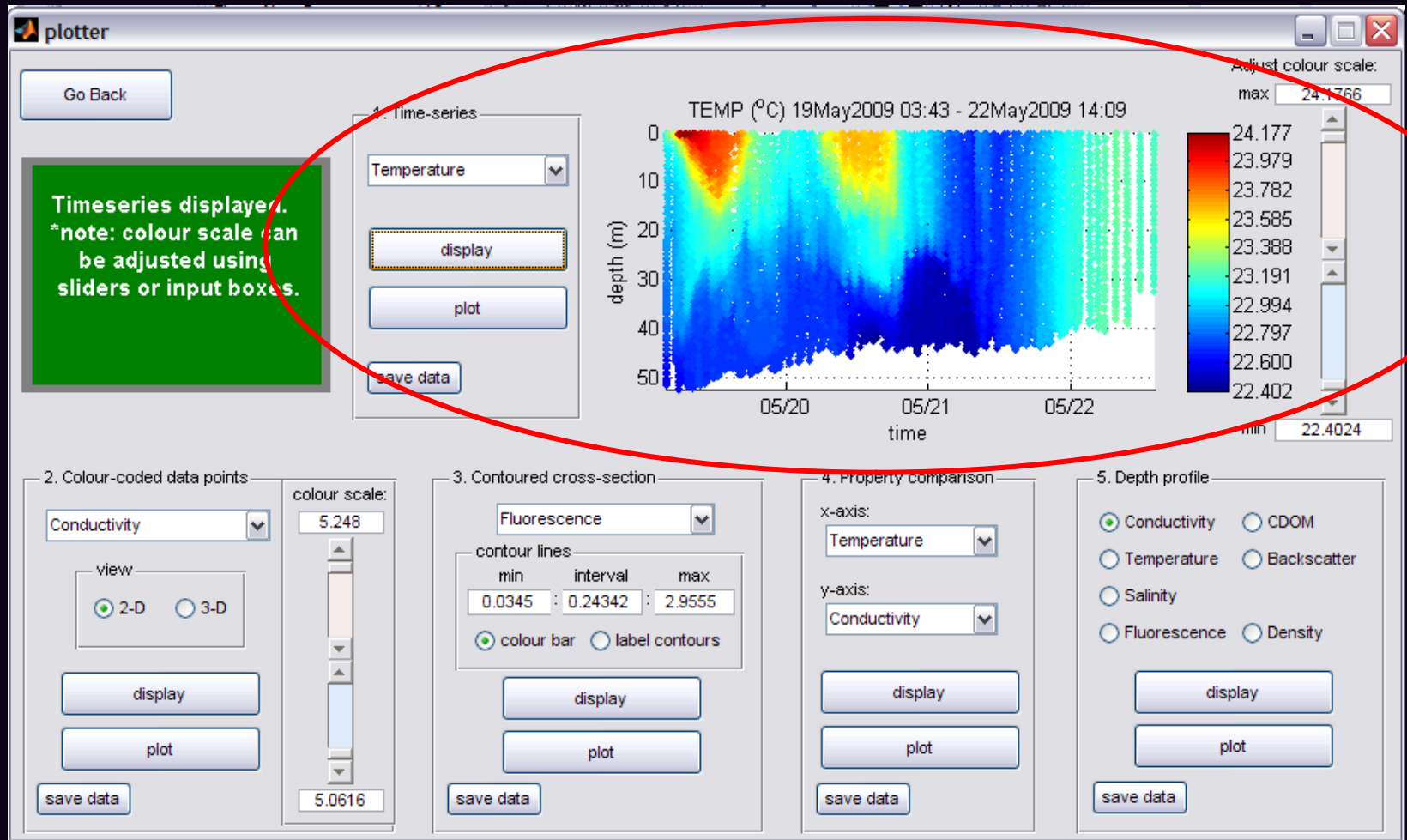


Glider vertical trajectory is displayed with data indices along the x-axis

Extract data segments



Data visualisation



GLIDERSCOPE's plotter dashboard

2. Colour-coded data points

Conductivity

view

2-D
3-D

display

plot

save data

colour scale:

5.248

5.0616

3. Contoured cross-section

Fluorescence

contour lines

min interval max
0.0345 0.24342 2.9555

colour bar
label contours

display

plot

save data

4. Property comparison

x-axis:
Temperature

y-axis:
Conductivity

display

plot

save data

5. Depth profile

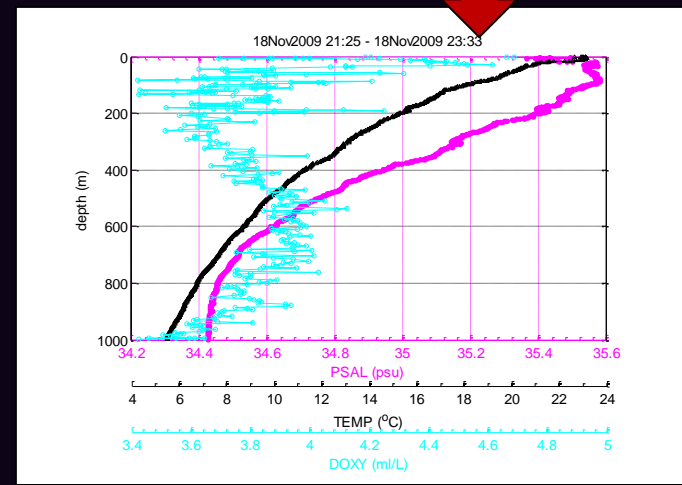
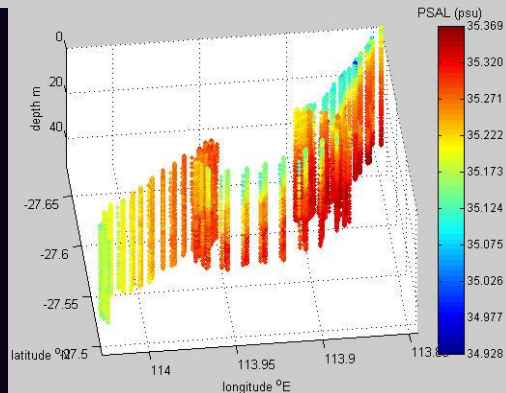
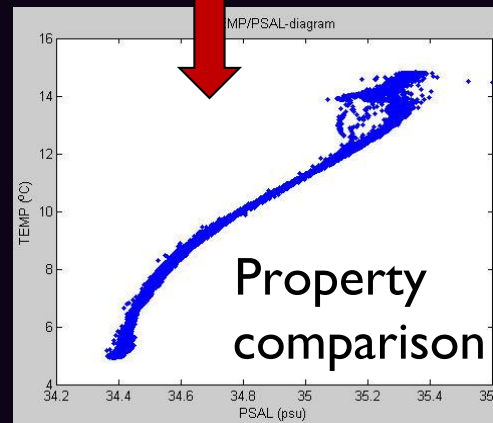
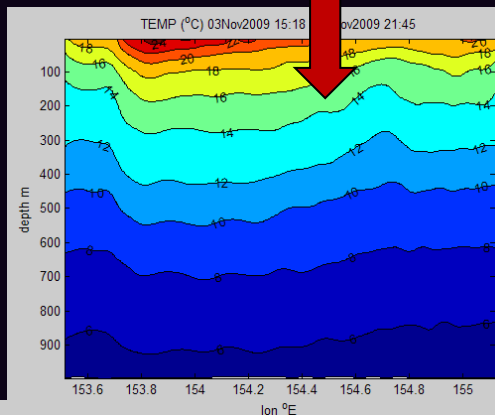
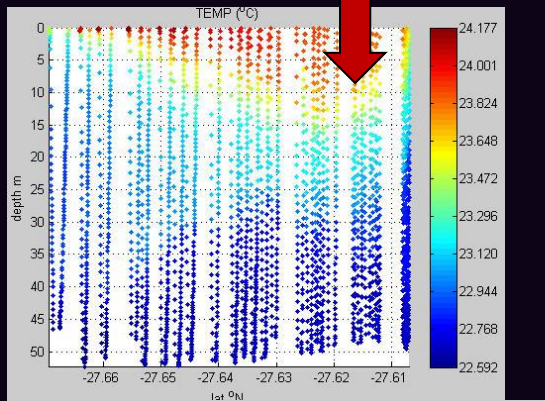
Conductivity
Temperature
Salinity
Fluorescence

CDOM
Backscatter

display

plot

save data



Colour-coded data points

Contoured cross-section

Depth profiles

Example datasets/analyses from Western Australia

Sequence of transects to examine evolution of current structure

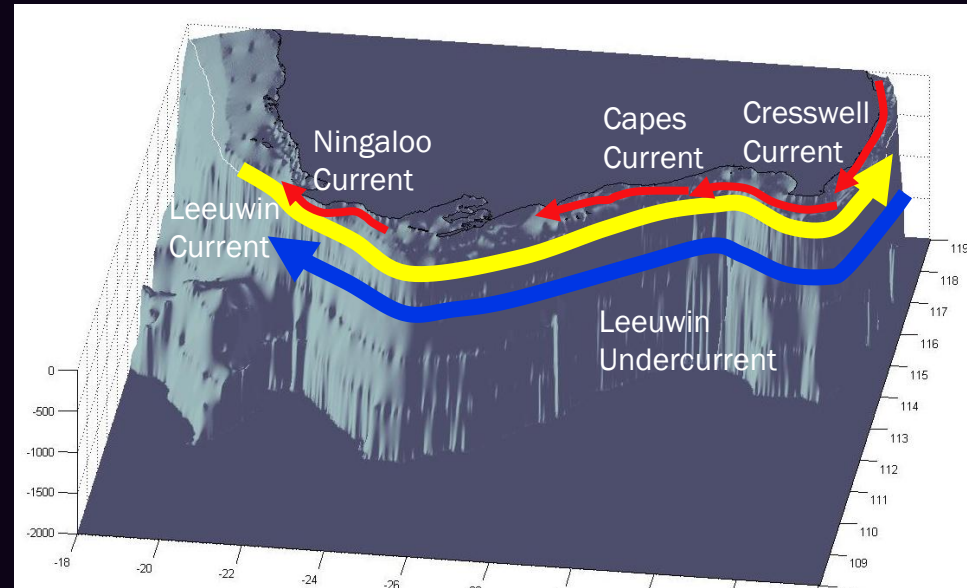
Temporal evolution of mesoscale eddy

Nearshore survey

Fixed location, geographically limited feature



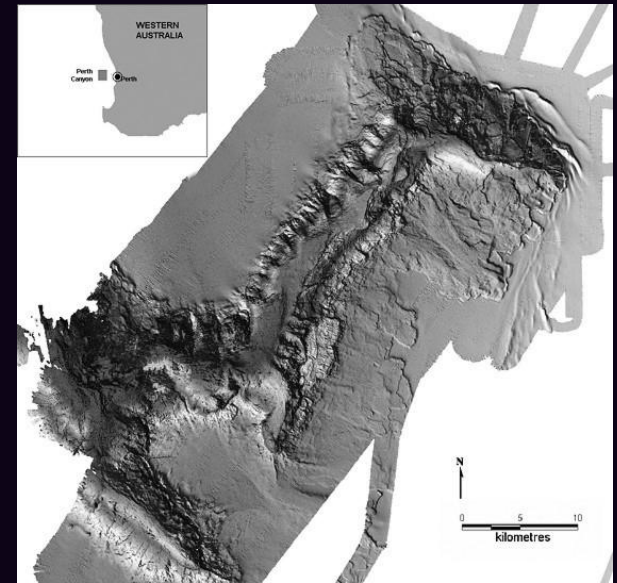
- Leeuwin Current system
 - southward-flowing, downwelling Leeuwin Current
 - northward-flowing Leeuwin Undercurrent
 - seasonal inshore, upwelling countercurrents



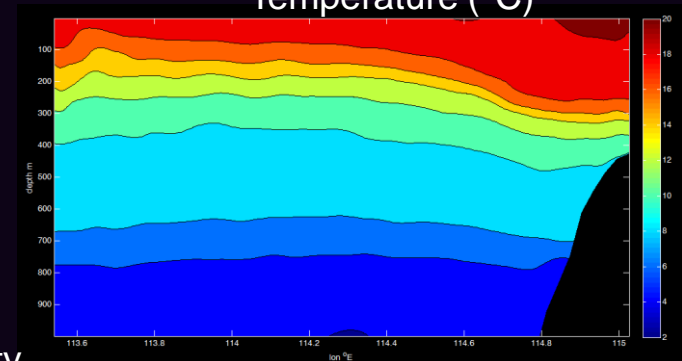
Examining processes related to geological features



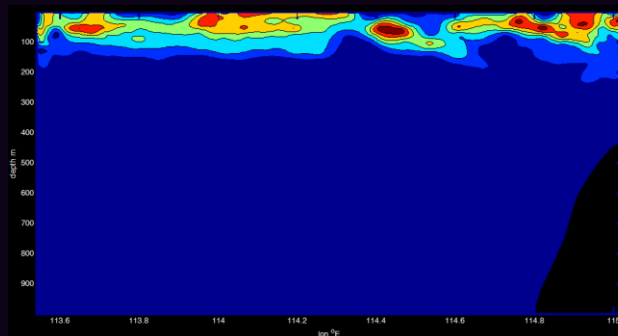
Perth Canyon deployment
May - Sept 2010



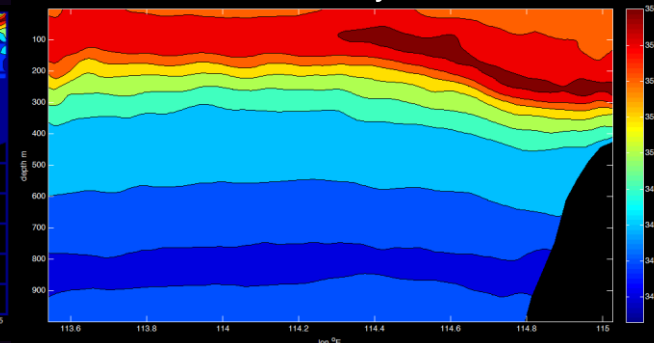
Temperature (°C)



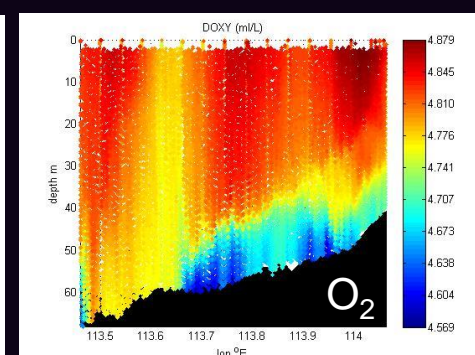
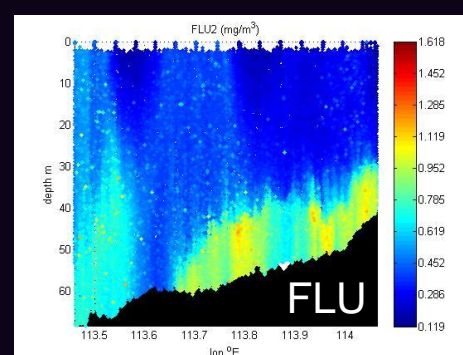
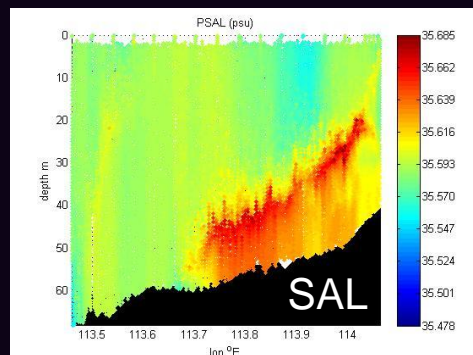
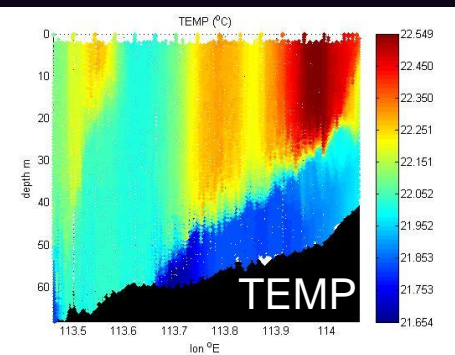
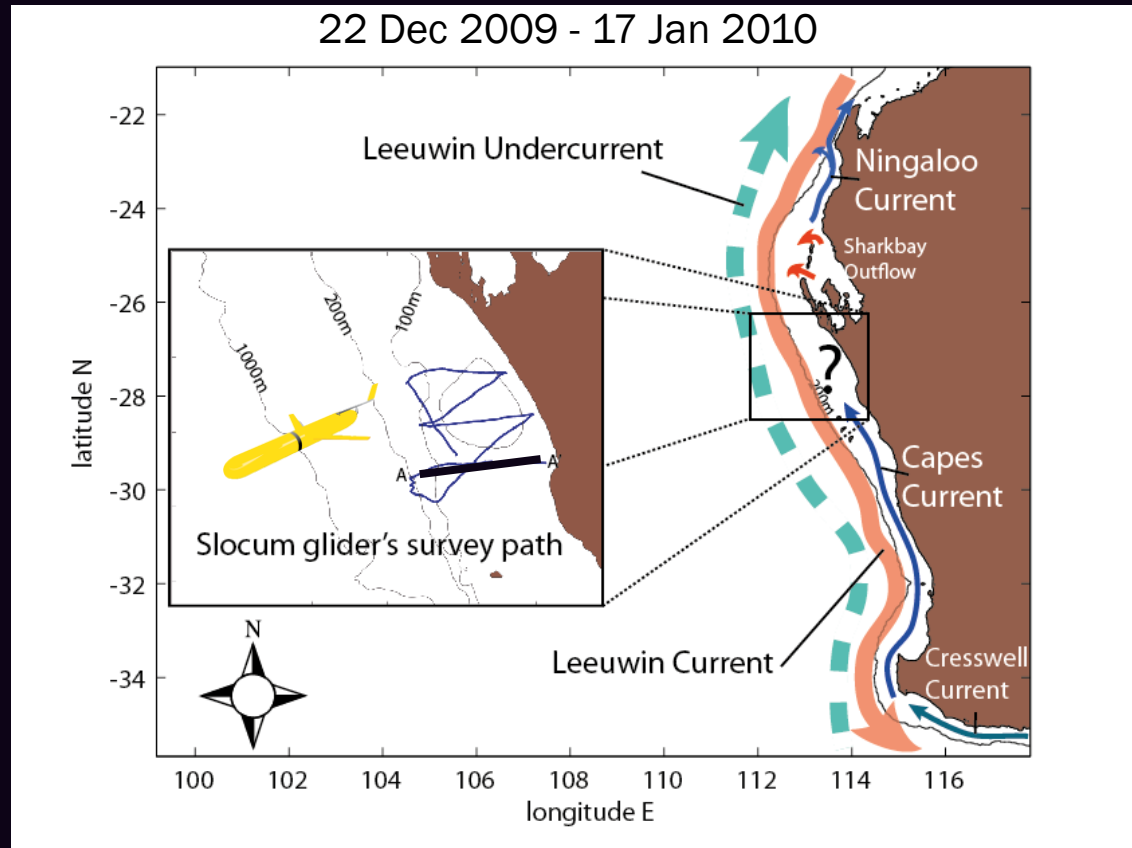
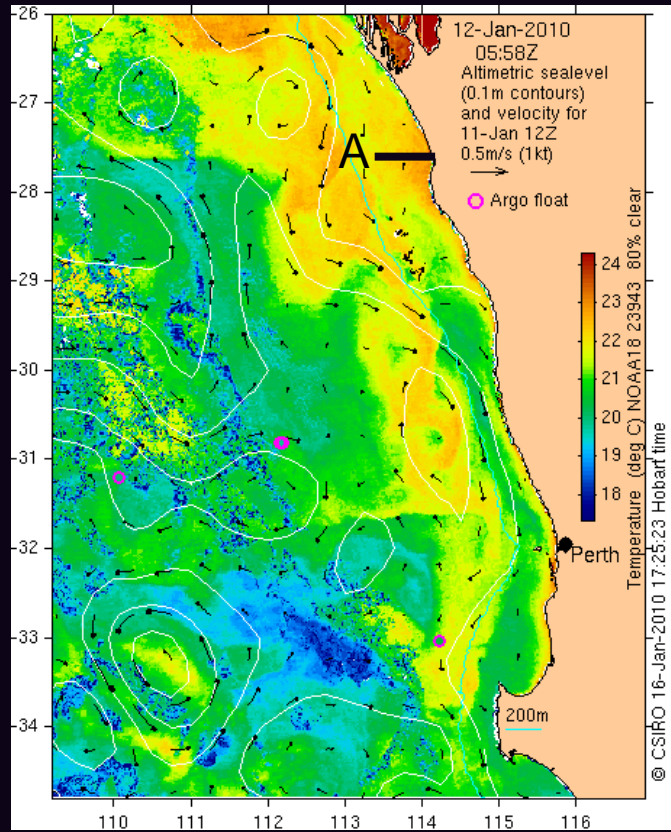
Chlorophyll fluorescence



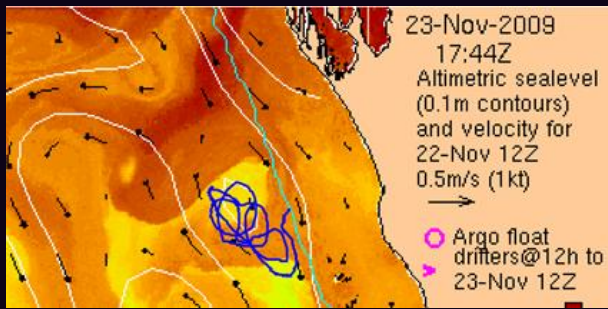
Salinity



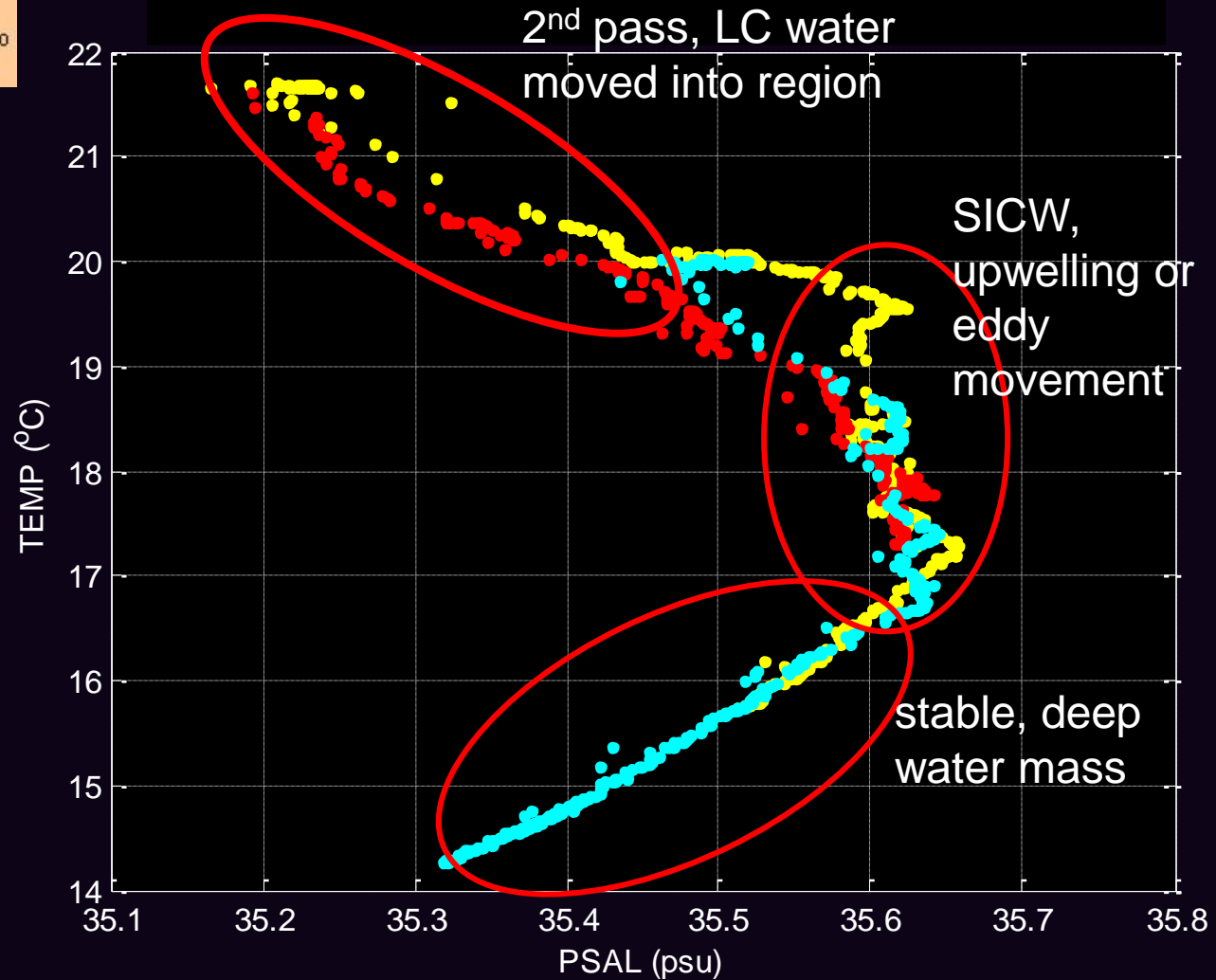
Nearshore survey – northern extent of the Capes Current



Examining multiple passes through a single point

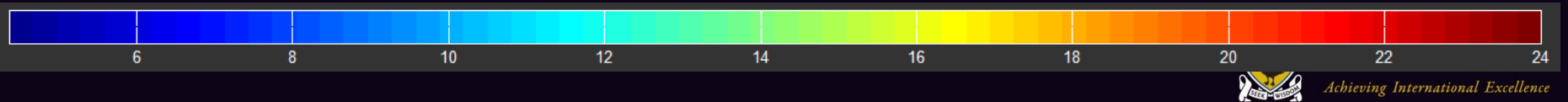
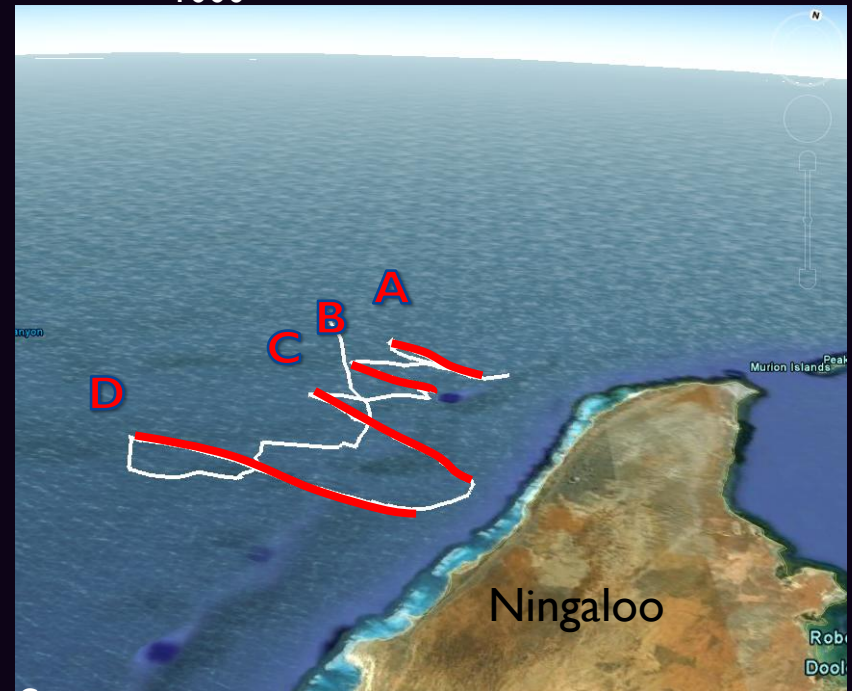
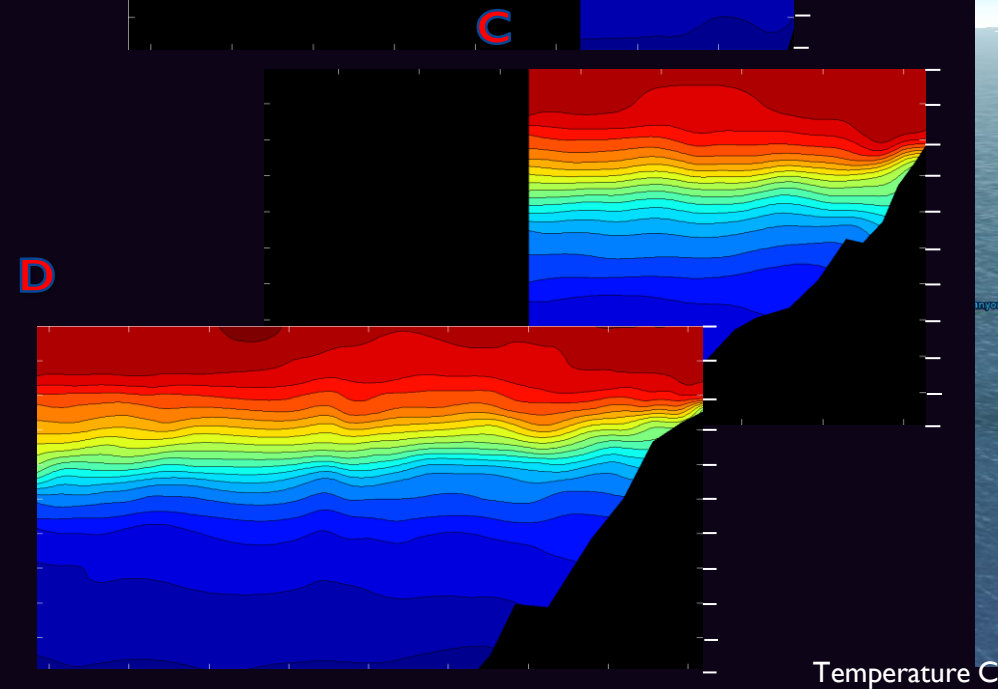
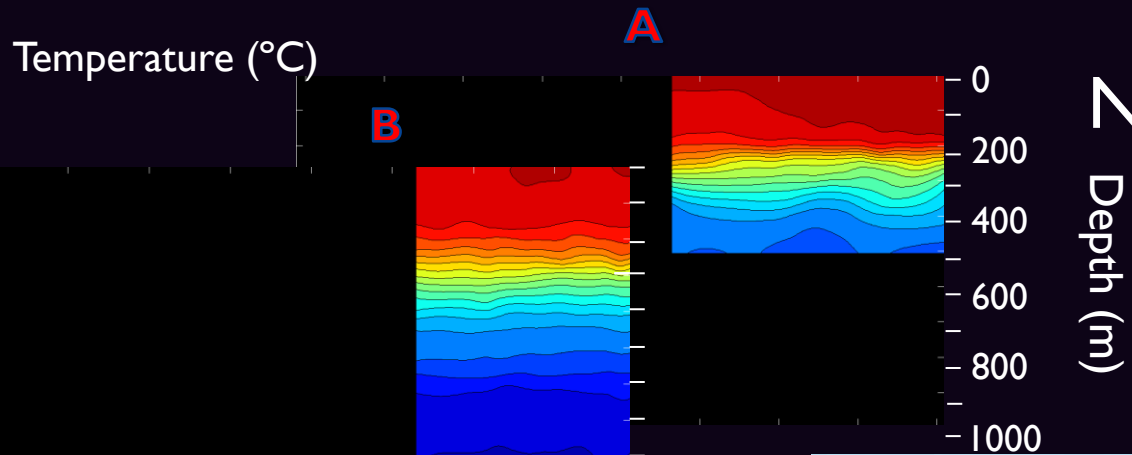


18 Nov – blue
5 Dec – red
9 Dec – yellow

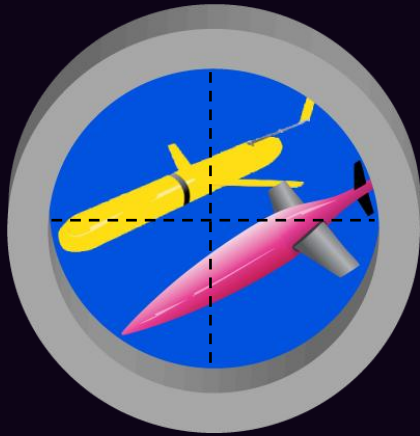


Examining a sequential series of transects

Ningaloo deployment
Sept 2010



Summary



- ANFOG glider data provides new, high-resolution view of oceanographic processes around Australia
- GLIDERSCOPE is a useful and effective tool for extracting, viewing and analysing glider data
- Can be used for any NetCDF glider data that conforms to standardised variable names (OceanSITES template)

GLIDERSCOPE (program, manual, example dataset)
is available for download at

<http://imos.org.au/anfog.html>

...or see me for a disk...

More ANFOG NetCDF data files

<http://imos.aodn.org.au>

EGO 6 or 7 in Perth, Western Australia?

The Kimberley – northern tropics, monsoonal climate, macrotidal (10 – 12 m)



Ningaloo Reef – fringing reef, 260 km long, access from beach



Shark Bay World Heritage Area



Mediterranean climate, microtidal (0.7 m)



temperate Southern Ocean region



THE UNIVERSITY OF
WESTERN AUSTRALIA
Achieving International Excellence

Perth & the Swan River



(B. Tessler)



Perth coastline & beaches





Rottnest Island from the Air - Image courtesy Rottnest Island Authority



Rottnest Island (20 km off Perth)



David Budd © 2008



Margaret River



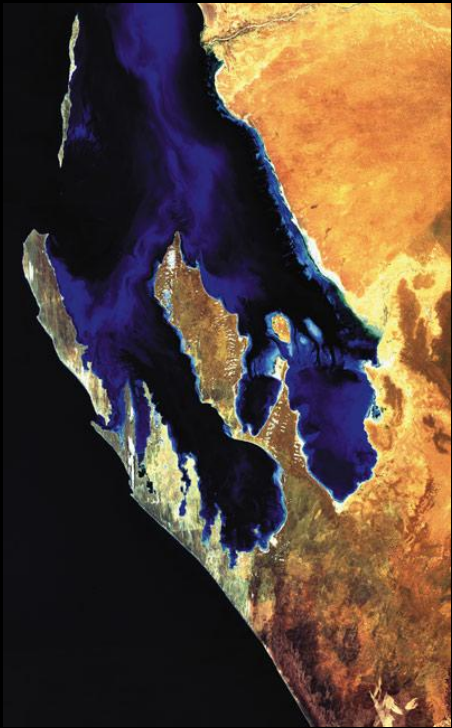
Shark Bay World Heritage Area



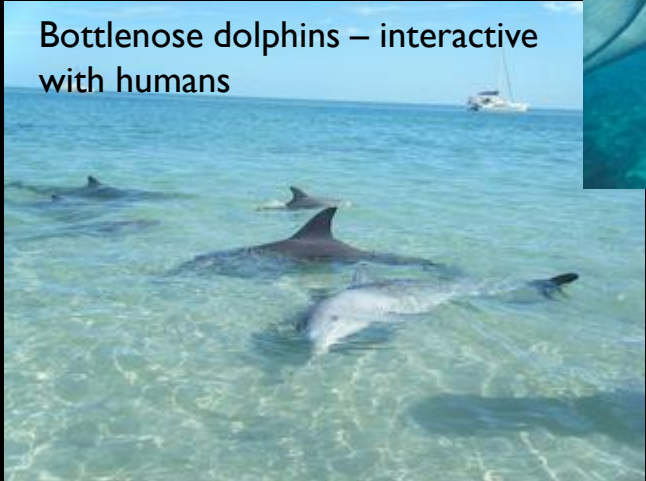
living stromatolites



hypersaline lagoons



dugongs

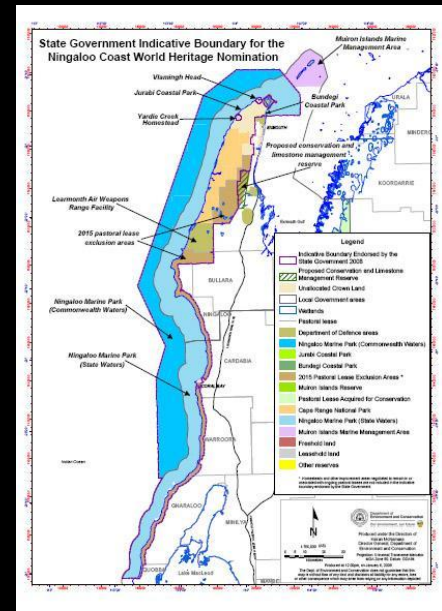


Bottlenose dolphins – interactive with humans



Tamala rose

Ningaloo Reef





(Steve Gibson, Ningaloo Blue Dive)



(S. Graham)

Whale sharks & manta rays at Ningaloo



(Tourism WA)

The Kimberley



Photo credits: Tourism WA

WA wildlife – feathery

galahs



rainbow lorikeet

splendid fairy wren



red-tailed black cockatoos

kookaburra



red kangaroo



bilby



quoll



numbat



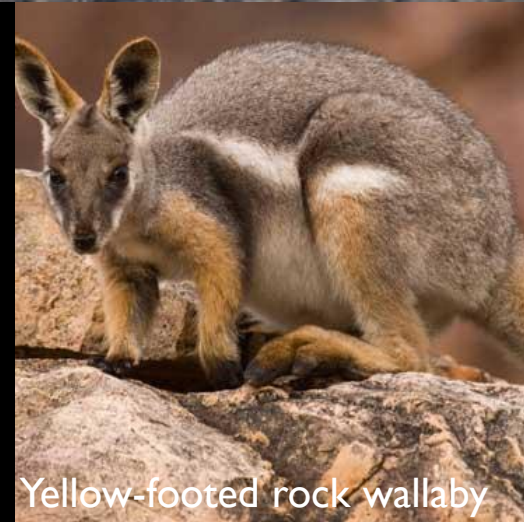
short-beaked echidna



antilopine wallaroo



WA wildlife – furry



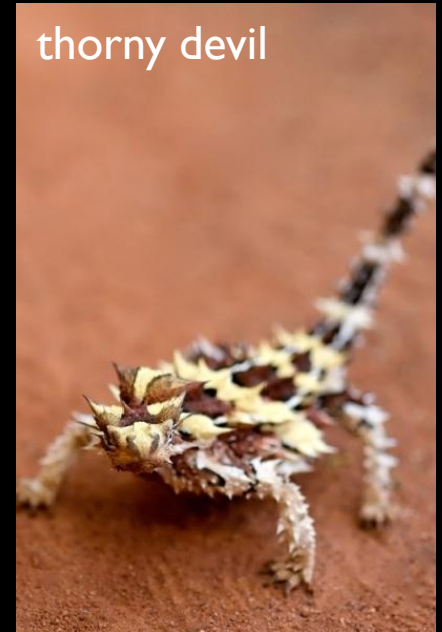
Yellow-footed rock wallaby



pygmy python



perentie



thorny devil

WA wildlife – scaly



blue-tongued skink



Frill-necked lizard

WA wildlife – kinda scary



white pointer



stonefish



saltwater crocodile



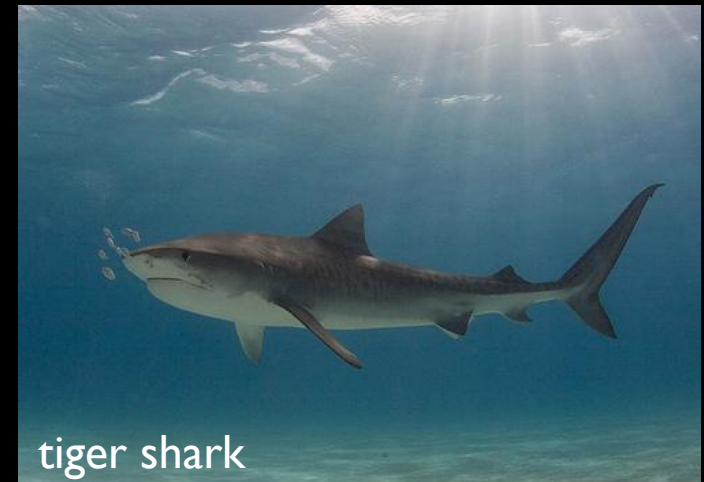
dugite



box jellyfish



inland taipan

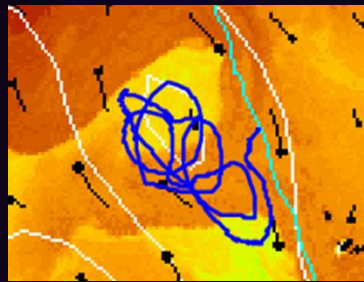
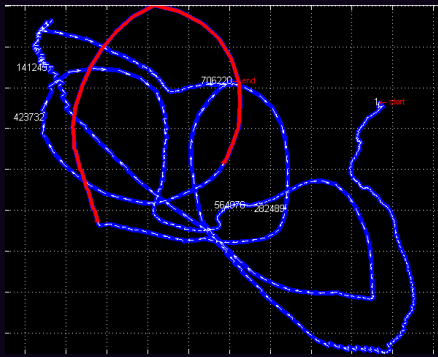


tiger shark

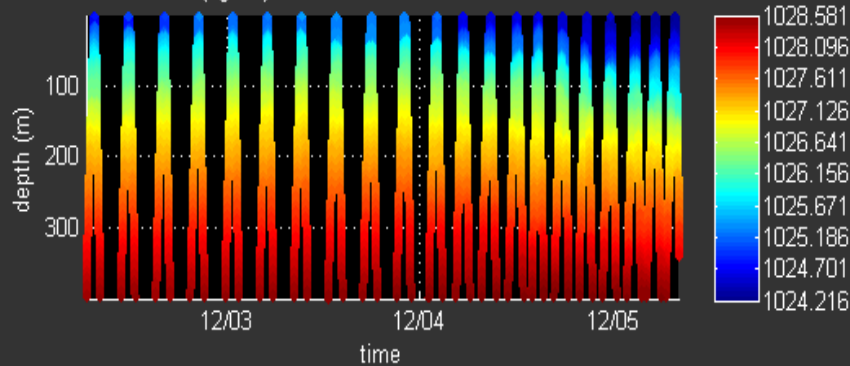


Kalbarri deployment

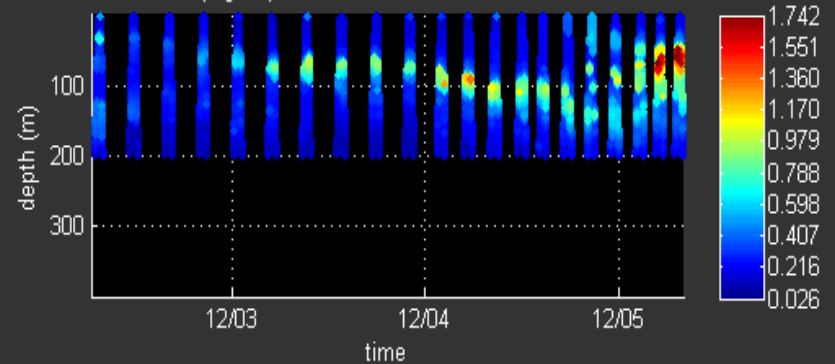
Nov - Dec 2009



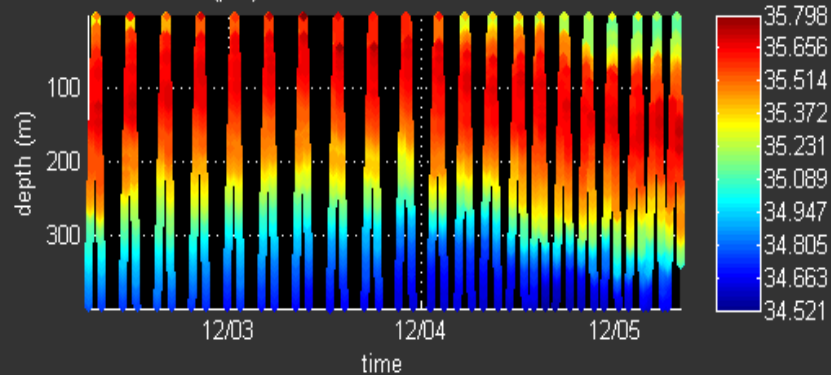
DENS (kg/m^3) 02Dec2009 06:30 - 05Dec2009 08:15



FLU2 (mg/m^3) 02Dec2009 06:58 - 05Dec2009 07:59



PSAL (psu) 02Dec2009 06:30 - 05Dec2009 08:15



TEMP ($^{\circ}\text{C}$) 02Dec2009 06:30 - 05Dec2009 08:15

